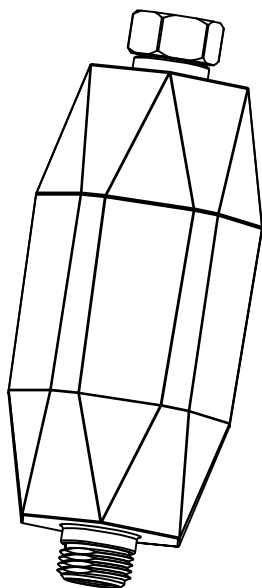


Shower filter



The product drawing is for reference only.

keep this instruction manual carefully before using the product.

1. Please tear off the plastic film on the surface of the filter element before use;
2. Filter replacement must use the original brand filter, non-original filter can not guarantee health and safety, please tear off the plastic film on the surface of the filter before use.
3. This product is suitable for municipal tap water whose inlet water quality meets GB5749-2006;
4. This product is strictly prohibited to be installed outdoors, please do not place objects on the product;
5. This product must be installed on a water supply pipe with a water pressure less than 0.4Mpa (The normal water pressure of household tap water is about 0.2Mpa);
6. The inlet water temperature must be within the range of 5~60 °C. If the temperature is too high, it will affect the life of the product. Life and performance;
7. Bathing treasure has not been used for a long time, and it can be used normally after 1-2 minutes before re-use;
8. According to the different water quality in different places, the normal household water consumption, it is recommended that the filter element be replaced in 4-6 months;
9. Product maintenance requires the use of parts purchased by our company;

- Please do not sprinkle detergent or unknown liquid on the product.
- Please do not place the product in high temperature and high humidity environment.
- Do not clean products with steel balls, detergents or corrosive liquids.
- Do not expose to direct sunlight or harmful chemicals.

Records of the warranty

Thank you for using our shower filter products, and provide you with services with the warranty card and invoice. Since the product is sold, if there is any non-artificial quality problem, the new product will be replaced within 15 days.

Customer name: _____ Date of purchase: _____

Customer Telephone number and address : _____

Date	Cause of issue <input type="checkbox"/>	Advice <input type="checkbox"/>	Company opinion

Product parameter

Item	Parameter
Name	shower filter
Product size	60*64*162
Water pressure	0.1MPa-0.4MPa
Temperature	5°C-60°C
Flow	8L/min (0.2MPa)
Product life	8000L
Effluent quality	Comply with the requirements of "Sanitary Safety and Function Evaluation Specification for Drinking Water Water Quality Dispositors-General Water Quality Dispositors" (2001)

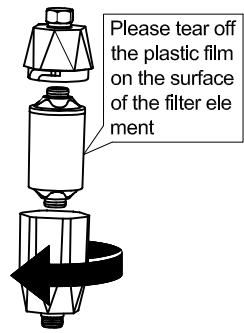
Exception handling

Exception content	Possible Causes	Solutions <input type="checkbox"/>
Slow Water flow	Filter plugged	Replace the filter element
	Stainless steel mesh plugged	Cleaning the stainless steel mesh
Water leaks at the interface between faucet and water purifier	Thread wear	Install with raw tape <input type="checkbox"/>
	Installation is not in place <input type="checkbox"/>	Re-install
	Deformation of silicone ring	Replace the silicone ring <input type="checkbox"/>
The water smells of chlorine	The filter element is not installed in place	Re-install the filter element
	The filter element has been used for too long <input type="checkbox"/>	Filter replacement <input type="checkbox"/>

Packing list

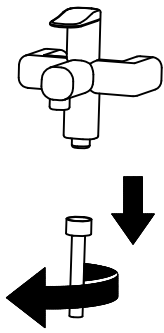
Main shell	1pcs <input type="checkbox"/>
Filter element	1pcs <input type="checkbox"/>
Manual <input type="checkbox"/>	1pcs

Installation



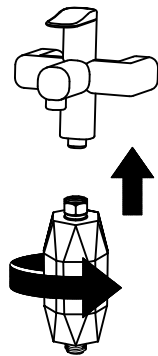
Unscrew the main body of the filter housing and take out the filter element

①



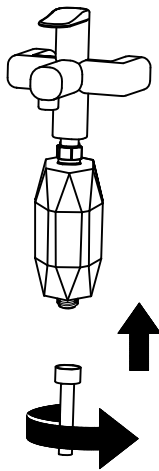
Unscrew the shower hose

②



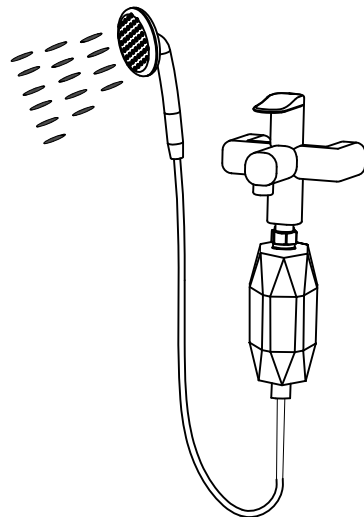
Connect the shower filter water inlet to the mixing faucet and tighten it

③



Connect the shower hose to the water outlet of the shower filter and tighten it

④

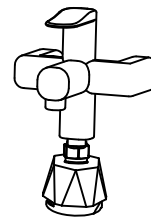


Turn on the faucet switch and check to ensure that there is no water leakage in all parts and joints

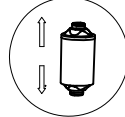
⑤

Filter replacement

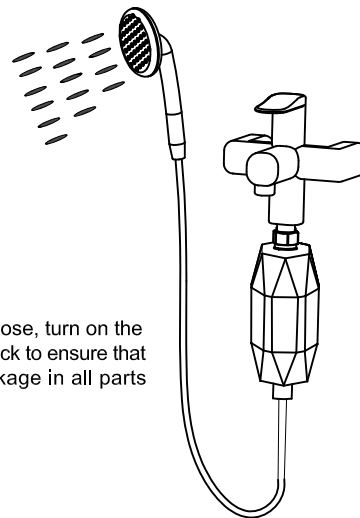
Please tear off the plastic film on the surface of the filter element



Pull out the filter element upwards

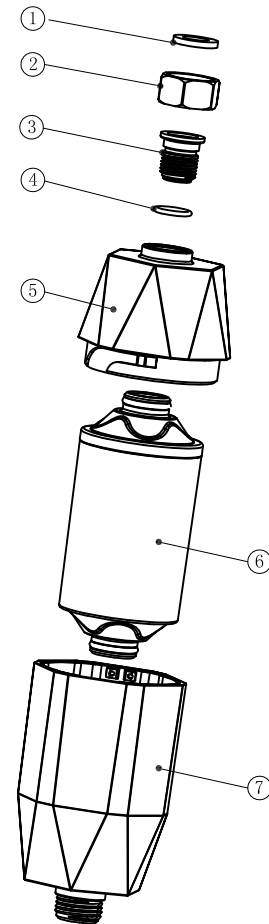


Open the lower cover of the filter case counterclockwise, take out the old filter, install the new filter element and tighten the main body of the filter case by rotating clockwise



Connect the shower hose, turn on the faucet switch, and check to ensure that there is no water leakage in all parts and joints

Name of parts



① Gasket

② Copper hexagon nut (chrome plated)

③ Copper screw connector

④ Seal ring

⑤ Filter housing upper cover

⑥ Filter

⑦ The filter shell body